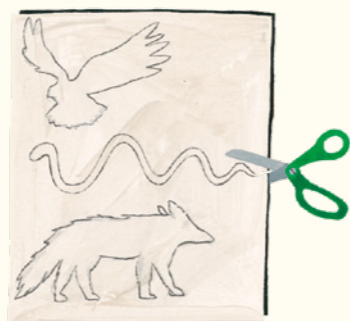


# Shapes on the move

Become an actor, writer, director—and even stage designer—all in one go! Create the characters and scenery for your very own theater and then act out your shadow-bound stories for family and friends.



**1** Draw your characters and the stage props on the white paper. No need for details—just draw their outlines.



**2** Glue the white paper onto some of the black card. Cut out each character/prop so that you now have shadow-figure versions of them.



**3** Attach a wooden skewer or straw onto the white side of each one using tape.



**4** Taking the cardboard box, tape together the flaps at both ends. Then, cut a rectangle shape out of the center of both of the large sides, leaving a border of about 2 cm at the edges.



**5** Take another piece of white paper and, if necessary, cut it so that it's the size of the large sides of the box. Using tape, attach it to the inside of the box.



**6** Using some more black card, create some environment pieces for your “stage,” such as trees, buildings, or clouds. Glue these to your white screen on the inside of the box.

## You will need

- several pieces of white paper
- a pencil
- a glue stick
- black card
- scissors
- tape
- wooden skewers or straws
- an empty cardboard box

**7** Put a lamp behind you so that it's directed at your screen, turn off the lights in the room, and you are ready to go! Take the figures you made in steps 1 to 3 and start performing your theatrical masterpiece.

## Tip!

*If you put your shadow theater on a table and stand behind it, you'll be able to move your figures around with ease.*

