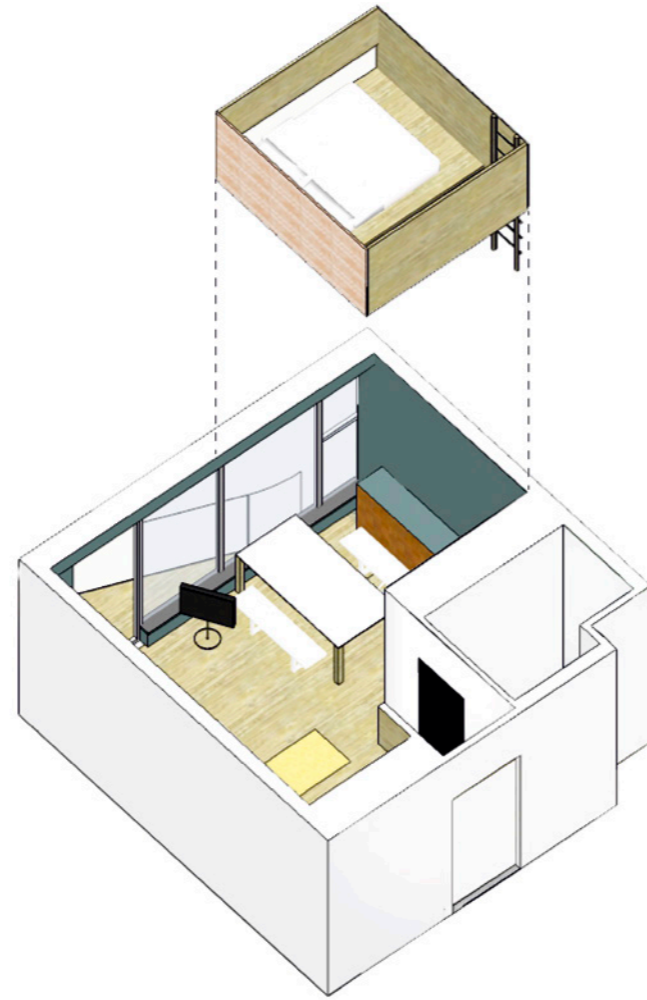


A Bedroom Bunk Inspired by a Treehouse

HONG KONG, CHINA ◦ The redesign of this apartment aimed to make more of its views over a lush urban forest. Its original layout featured a typical residential floor plan with separate bedroom, living, dining, and kitchen spaces arranged on a single level. Architects **NCDA** decided better use could be made of the 35 m² (370 ft²) space and designed a split-level layout, which was inspired by a treehouse.

They removed the internal wall to create an open-plan area for living, cooking, and dining. An elevated bedroom deck was added above the dining area with just enough space for the occupant to sit upright while reading in bed. The cozy bunk, which is clad in natural pine, appears to hover above the ground, while a bedside window frames the forest view, reinforcing a connection with the lush greenery outside.

SIZE 35 m² (370 ft²) ◻ 1–2 residents



LOFTY IDEALS
▲ An elevated *bedroom deck* made from natural pine was added to this Hong Kong apartment, freeing up extra space beneath.