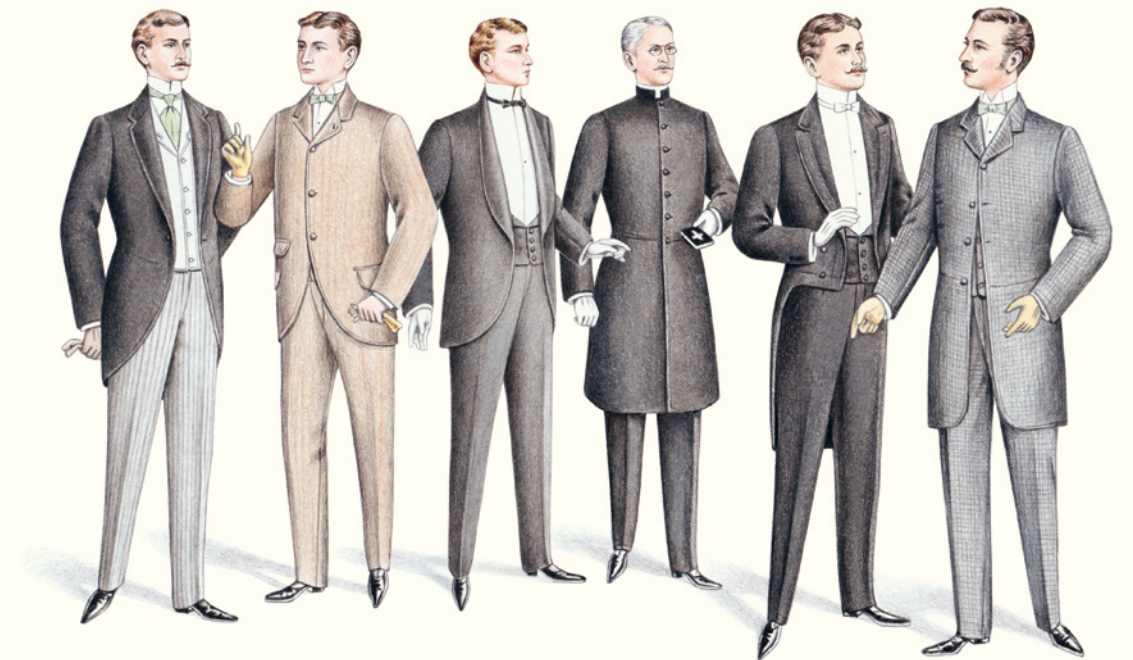




PERFECTLY DRESSED: A TIMELINE OF THE SUIT

The evolution of the classic men's suit, from the innovations of Charles II to present-day Savile Row silhouettes



ABOVE Suit styles may have changed over the years, but it remains the quintessential male garment.
OPPOSITE A present-day incarnation of the suit.

MEN'S TAILORING has gone through multiple iterations over the last 360 years, inspired in turns by society, sports, and style. More practical than might be appreciated, the suit – with its hardy cloth, practical cut, and clever features – has evolved and yet remains the quintessential male garment.

This timeline illustrates a progression of changing styles, instigated and popularised by influential designers, historical British figures – even the man on the street. Regency dandy Beau Brummell; Edward VII

(Queen Victoria's son and one of the most photographed men of the day); and pop cultural icons like David Bowie all played a part in popularising the styles traced here. Partly it was their flair for dressing that ushered such styles to prominence. But more so was the singular blend of political, social and economic conditions of each individual era that helped bring a particular style to the fore. In this respect, the suit in all its iterations offers a portrait in three pieces of history at a given moment. •