



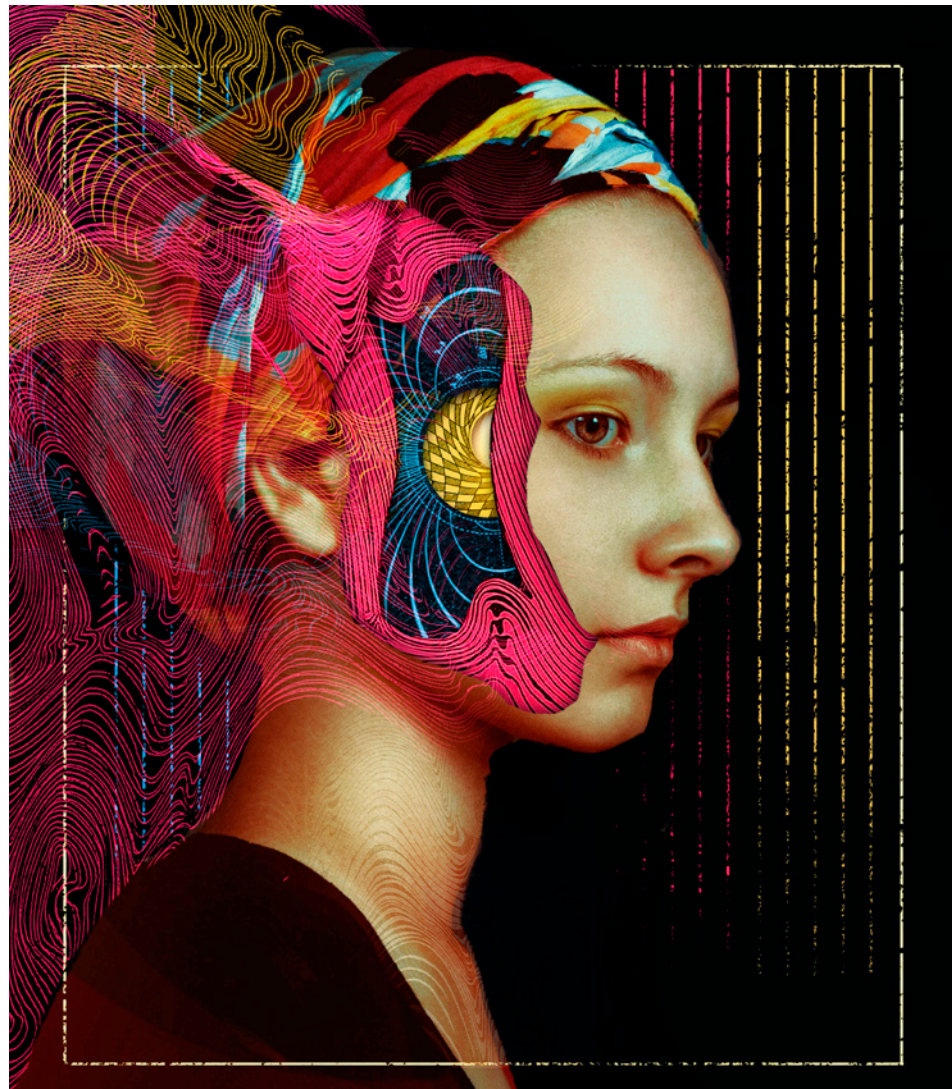
[1]

ALEX ECKMAN-LAWN

Philadelphia, Pennsylvania, USA

The first thing that hits you when you look at Alex Eckman-Lawn's work is his eerie, atmospheric take on chiaroscuro. His hand-cut works inhabit a dark, weird world where logic is irrelevant. One of the ongoing motifs in his work is the depiction of erosion, as if the body or an object has layers peeled away to reveal hidden cavities. "My work explores the mystery and fear associated with the body's inner processes, the feeling of being trapped in a decaying cage," he explains. "I dissect my paper sculptures, sometimes violently cutting away at them, burrowing into the body creating caverns and uncovering new spaces." The Philadelphia-born illustrator describes himself as "both surgeon and architect," creating pieces that fuse his own digital paintings with medical textbooks. His work has been featured in publications such as *Juxtapoz* and *The Observer*, as well as numerous book and album covers.

[2]



[1] ANCESTOR
20.3 x 25.4 cm
2019

[2] PATTERN
20.3 x 25.4 cm
2020

[3] ANTIQUITY V
20.3 x 25.4 cm
2019

[3]

