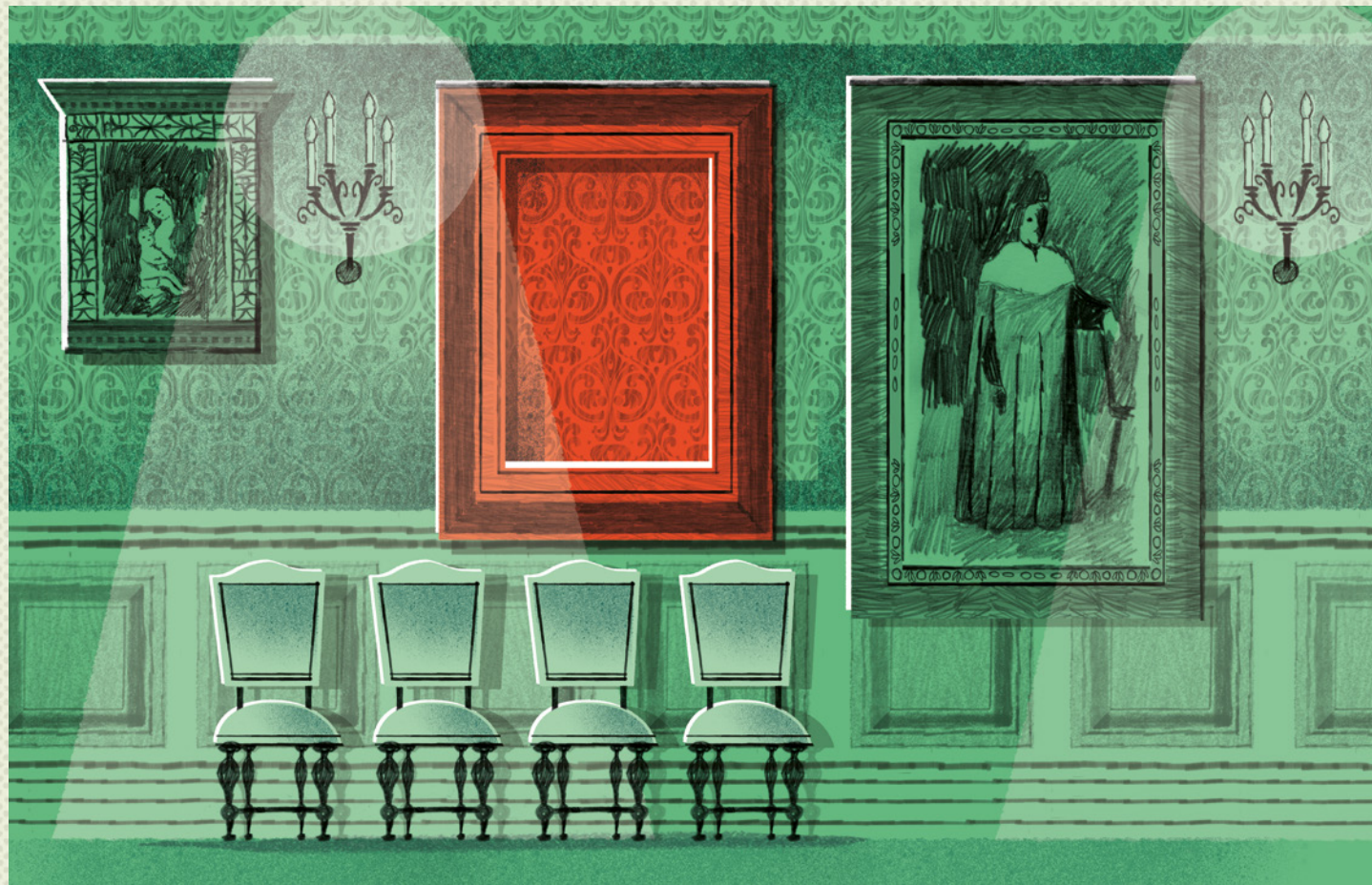


HISTORIC ART ROBBERY AT THE ISABELLA STEWART GARDNER MUSEUM

DISGUISED AS POLICE OFFICERS, TWO THIEVES STEAL 13 WORKS OF ART WORTH \$500 MILLION FROM THE ISABELLA STEWART GARDNER MUSEUM

REGARDED AS THE GREATEST ART ROBBERY IN US HISTORY, THE FBI HAS YET TO SOLVE THE CASE

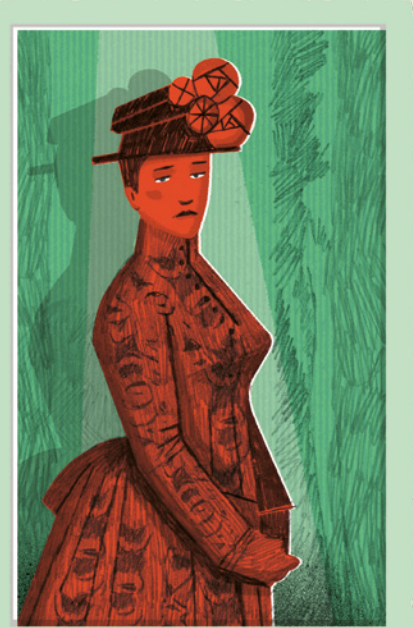


BOSTON'S ISABELLA STEWART GARDNER MUSEUM. THE EMPTY FRAME PROTECTED A FAMOUS STOLEN WORK OF ART BY DUTCH PAINTER REMBRANDT.

WHEN: MARCH 18, 1990	WHERE: THE ISABELLA STEWART GARDNER MUSEUM IN BOSTON, MA, US	WHO: TWO MYSTERIOUS AND CLEVER THIEVES	LOOT: 13 WORKS OF ART WORTH \$500 MILLION	OUTCOME: THERE WAS NO TRIAL. THE FBI NEVER MANAGED TO IDENTIFY THE THIEVES
--------------------------------	--	--	---	--

THE ISABELLA STEWART GARDNER MUSEUM

PORTRAIT OF ISABELLA STEWART GARDNER, AMERICAN PATRON AND ART COLLECTOR.



ITS PAINTINGS, SCULPTURES, TAPESTRIES, FURNITURE, AND OTHER PRECIOUS DECORATIVE ITEMS WERE A SERIOUS TEMPTATION FOR THE THIEVES

Isabella Stewart Gardner was an extraordinary woman and ahead of her time in many respects. She was fortunate to have had a good education and be able to travel the world.

On a visit to Italy, Isabella befriended some great artists who sparked her passion for art. When she returned to the US, still inspired by her unforgettable Italian

experience, Isabella converted her Boston mansion into a thoroughly charming Renaissance-style museum.

The Isabella Stewart Gardner Museum was soon admired for its warm, homey atmosphere and the exquisite collection of paintings, textiles, and furniture that its creator had acquired from European, Asian, and American artists.

PLANNING THE ROBBERY

AN INGENUOUS OPERATION THAT LEFT FEW CLUES FOR THE POLICE

The few traces left behind by the thieves were not clear enough for investigators to obtain details on how the robbery had been planned. In any case, the police declared that it had been plotted several months in advance. The burglars knew everything about the museum and its state-of-the-art security systems.



BOSTON'S ISABELLA STEWART GARDNER MUSEUM. ITS DESIGN WAS INSPIRED BY RENAISSANCE PALACES.