

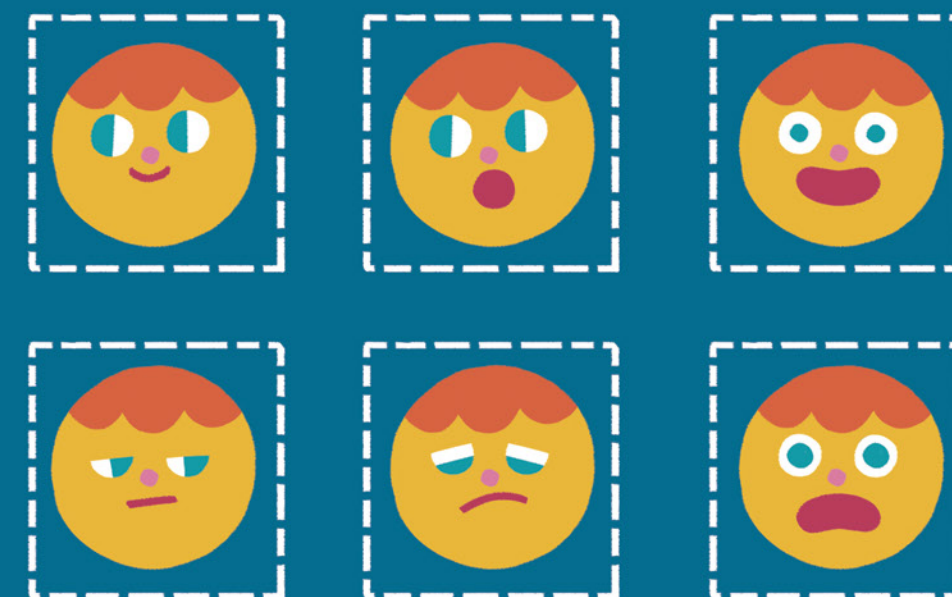
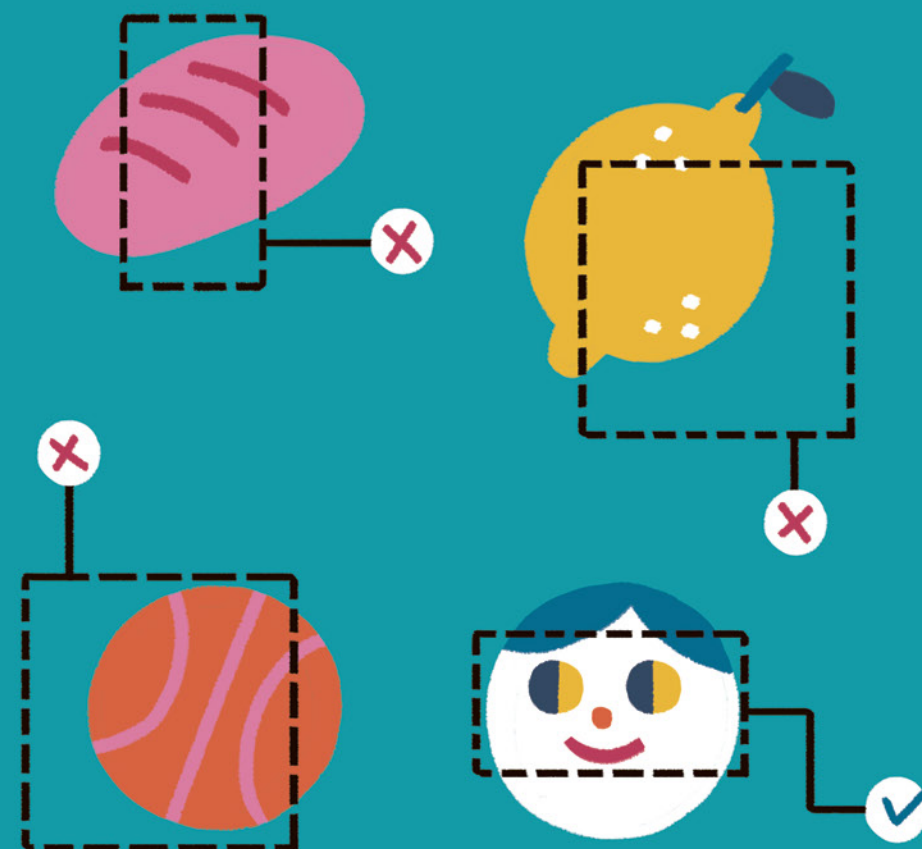
CAN THEY UNDERSTAND HOW WE FEEL?

In the same way that there are machines capable of recognizing speech, technology is being developed to identify human emotions.



Between grandma and her granddaughter there is a conflict. The girl's bracelet interprets her disappointment with the gift, although she says the opposite. Who should grandma believe? The machine or her granddaughter? Can we absolutely guarantee that the machine is correctly interpreting the girl's feelings? **Is it possible for a machine to understand better out emotions than we do?**

Facial expressions are one of the first ways that people learn to recognize other people's feelings and intentions.



Even though they have a lot of information to drive conclusions in regards of feelings, machines are not infallible. But then again, neither are people!

Human emotions are very complex and every person feels and expresses their feelings in a different way. There are a lot of factors that might unsettle our reactions and make reading our feelings properly very difficult.

Let's find out what machines do to recognize our feelings in two simple steps.

1

Recognize that a face is a face (not a loaf of bread, or a lemon). This technology is very present nowadays—when social media suggests tagging someone, playing with picture filters on social media, going through the airport security control or even unlocking your phone.

2

Analyzing a series of elements (facial expression, warmth, gestures, speech, etc.) to estimate what is the specific emotion felt by someone else.