

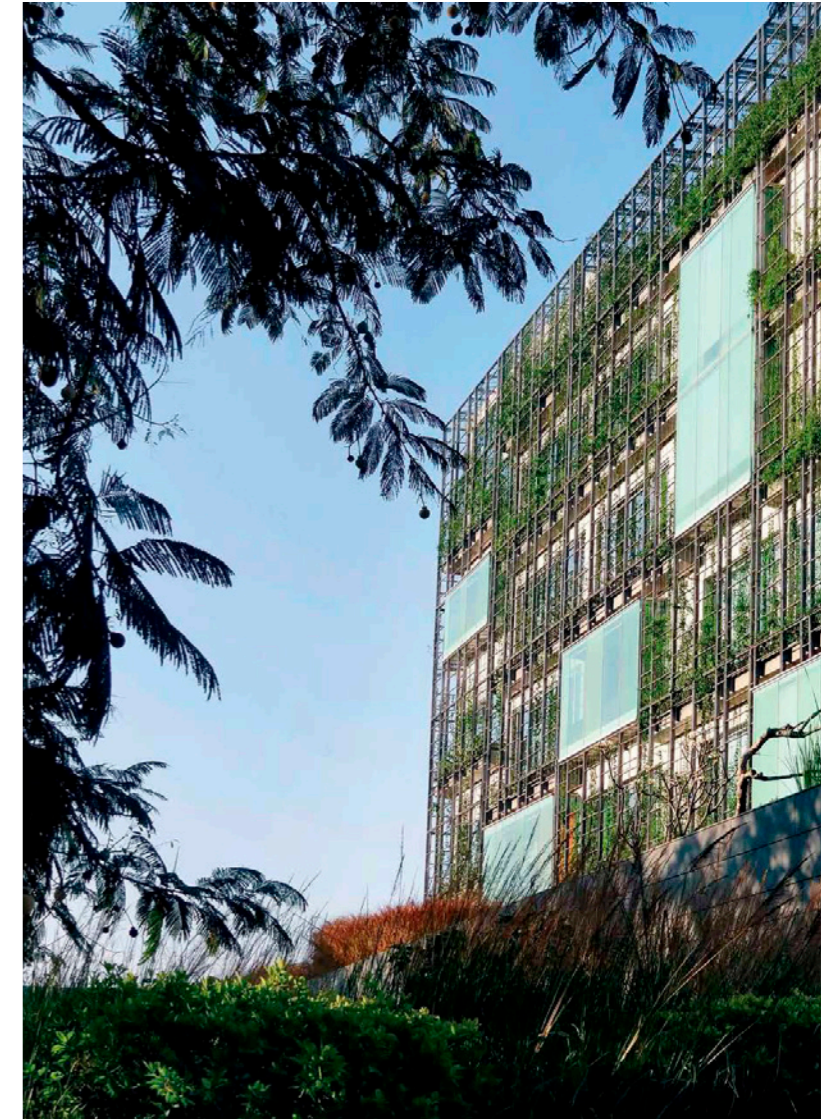
## Green wall technology takes a new direction

How a green wall can have an impact on the urban landscape—environmentally, aesthetically, and socially.

KMC Corporate Office  
RMA Architects  
Hyderabad, India  
2012

Asian cities with similar climates. What's new here, however, is that the vegetation has been selected to bloom at different times throughout the year to create a dynamic exterior with patterns that change across seasons. Since the living facade needs to be maintained year-round, it also functions as a connector of two socially and economically disparate groups—the gardeners and the company's employees. With gardeners working on balconies on the same levels as meeting rooms, common hierarchical divisions are softened.

Green wall technology is not new in sustainable architecture, but RMA Architects' design for a corporate building in Hyderabad, India, takes it to a new level. In this double-skin facade, the outer wall consists of an aluminum trellis with hydroponic trays, drip irrigation, and misting systems for growing a variety of plant species. The living screen system modulates the flow of light and air into the building, while also cleansing the facade of dust during the hot and windy summer months. It is a design that could benefit many South



*Left:* From afar, the building blends into the topography of its surroundings, yet it is still visually unique.

*Right:* The outer facade with its aluminum trellis and hydroponic trays. A variety of plant species can grow here.