

# Namibia Desert Express

## An African Safari by Train

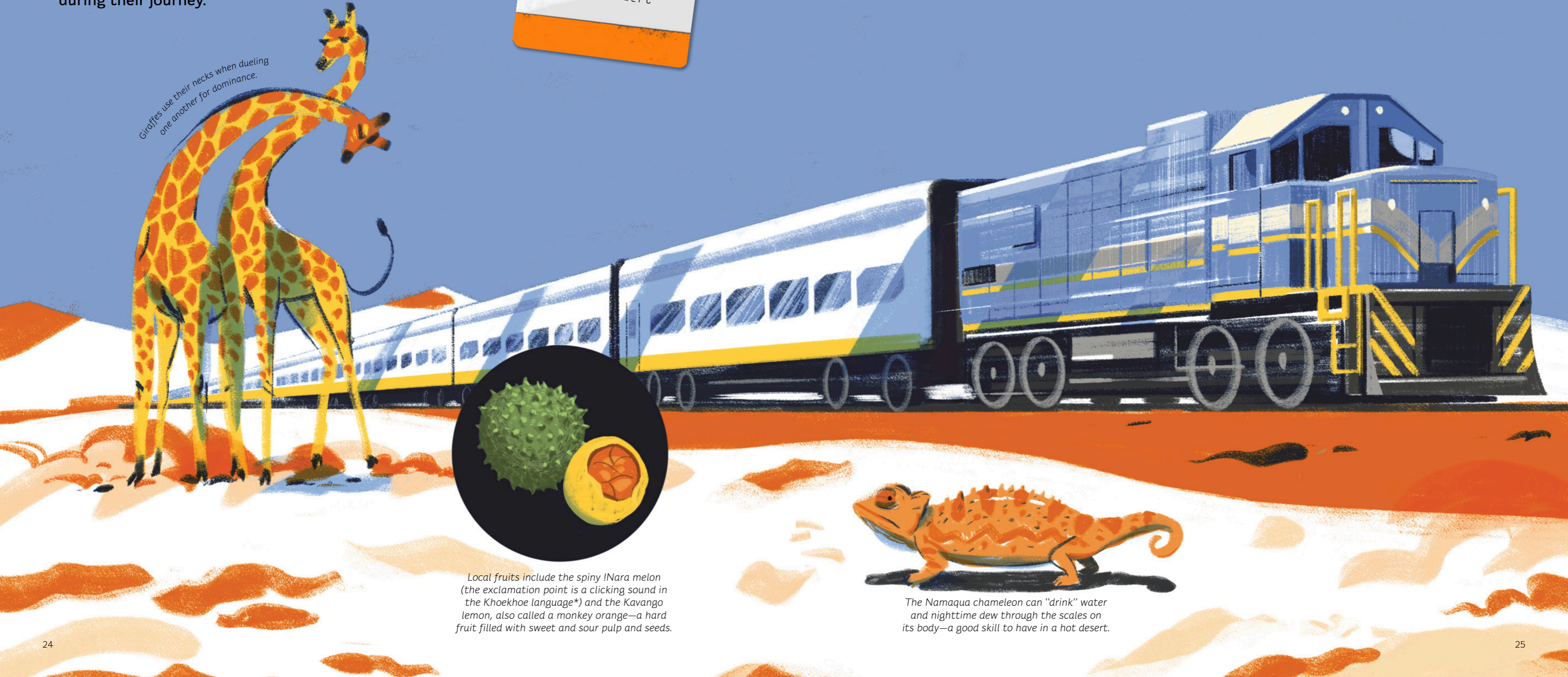
The Namibia Desert Express is a sightseeing train ride that lasts several days as it travels across the sublime desert landscape of this southern-African country. There are multiple stops along the way and passengers are able to enjoy fun activities and incredible sights during their journey.

**COUNTRY:** Namibia  
**LENGTH:** 220 miles  
[354 kilometers]  
**MAIN STOPS:**  
Windhoek,  
Swakopmund  
**STARTED OPERATING:**  
1998  
**FAMOUS FOR:**  
traveling across  
an inhospitable but  
beautiful desert

A trip on the Namibia Desert Express is a true adventure, as it gives you the opportunity to spot lots of animals along the route. One of the stops is for a safari drive in Jeeps, during which you can see giraffes and zebras drinking at watering holes (while always keeping an eye out for wild dogs that might attack them).

As a birthday treat, Sonu has booked a cabin for herself on the train. Soon Windhoek is behind her and she enjoys the safari a lot. She sees herds of wildebeest, moving together as though they share a common purpose. To her, they look like powerful, muscular wild cows.

Giraffes use their necks when dueling one another for dominance.



Local fruits include the spiny !Nara melon (the exclamation point is a clicking sound in the Khoekhoe language\*) and the Kavango lemon, also called a monkey orange—a hard fruit filled with sweet and sour pulp and seeds.

The Namaqua chameleon can "drink" water and nighttime dew through the scales on its body—a good skill to have in a hot desert.